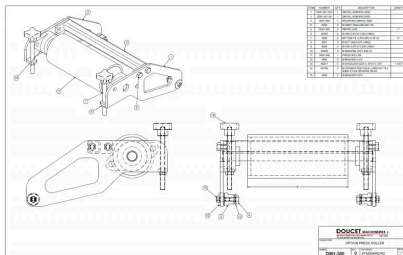


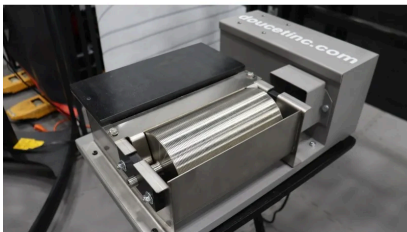
DOUCET

RC - STOCK GLUER

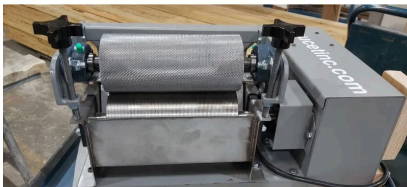
The Stock Gluer is a table top motorized stainless steel roller equipped with a two liter capacity reservoir easily removable for clean up, definitely the most versatile and best value applicator on the market.



PRESSURE ROLLER



STOCK GLUER



METAL HOLD DOWN ROLLER

CHARACTERISTICS & OPERATION

- Overall dimensions: 13" x 20 1/2";
- Stainless steel Spread Roller: 8" x 3 1/2" diameter;
- Feed speed is 50 feet per minute;
- Electric motor 110 VAC.

OPTIONS & SPECIFICATIONS

- Metal Hold Down Roller is available as an option;
- Other width than 8" available upon request;
- Mirror configuration available.



DOUCET

P. 1-866-673-8876
P. 1-819-367-2633
E. info@doucetinc.com
doucetinc.com

**DISCOVER OUR
RESOURCE CENTER**

- Articles
- Tutorials
- Videos
- Technical Support
- Tools

